



CLEAR ALIGNER



WORKFLOW EN
CA® CLEAR ALIGNER

WORKFLOW ON
CA® CLEAR ALIGNER



CLEAR ALIGNER

CLINICAL PAPER

Los casos expuestos han sido realizados por el Dr. Pablo Echarri. El trabajo de laboratorio ha sido realizado por el laboratorio Ladent, y se han utilizado los materiales del Scheu Dental Technology.

All cases were carried out by Dr. Pablo Echarri. All the laboratory work was carried out by Ladent laboratory, and the Scheu Dental Technology materials were used.

© 2017 Centro de Ortodoncia y ATM, Ladent, SL Todos los derechos reservados.

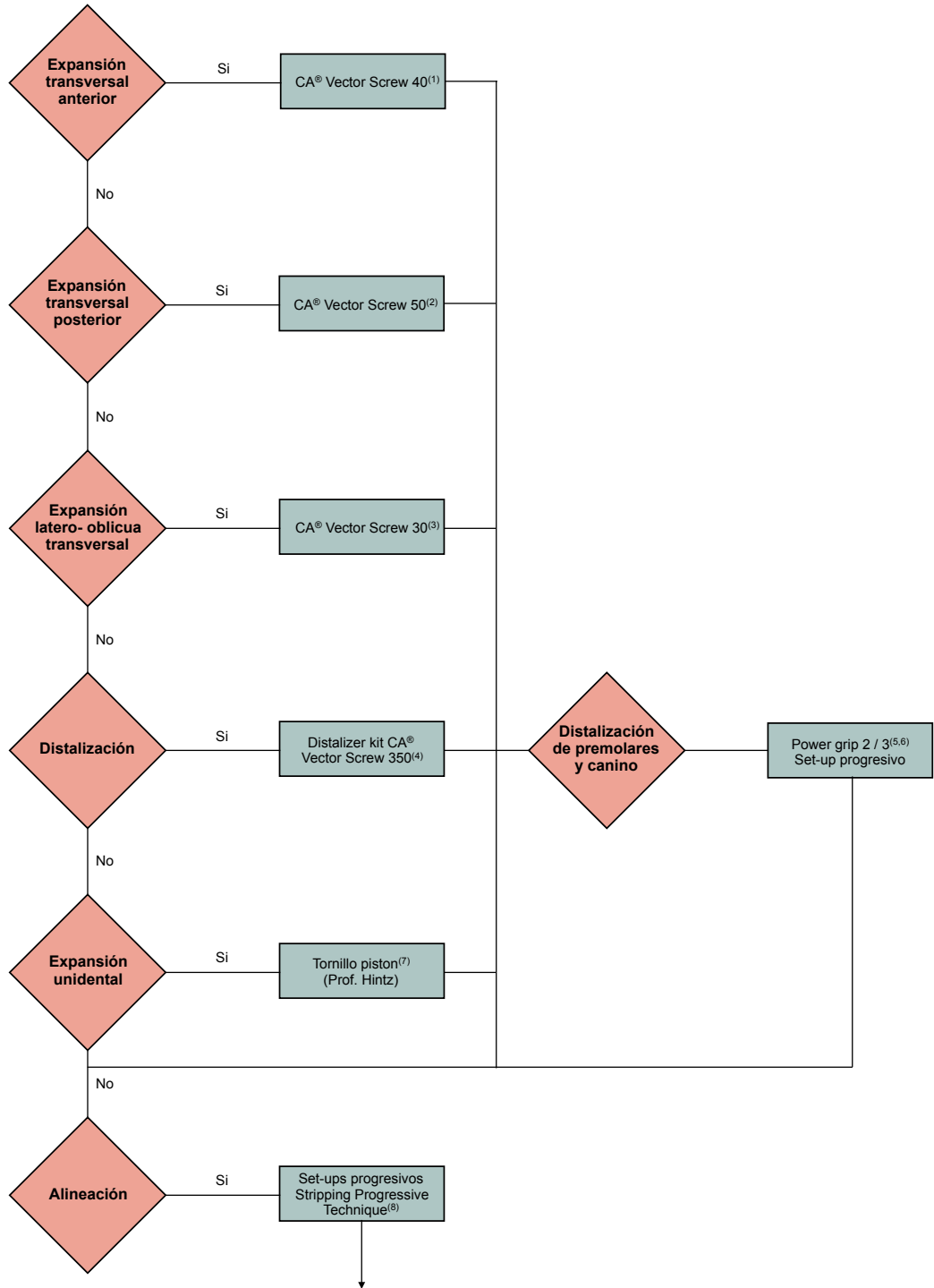
Ninguna parte de esta publicación puede reproducirse o transmitirse por ningún medio electrónico o mecánico, incluyendo fotocopiado o grabado por cualquier sistema de almacenamiento de información sin el permiso escrito previo de los editores.

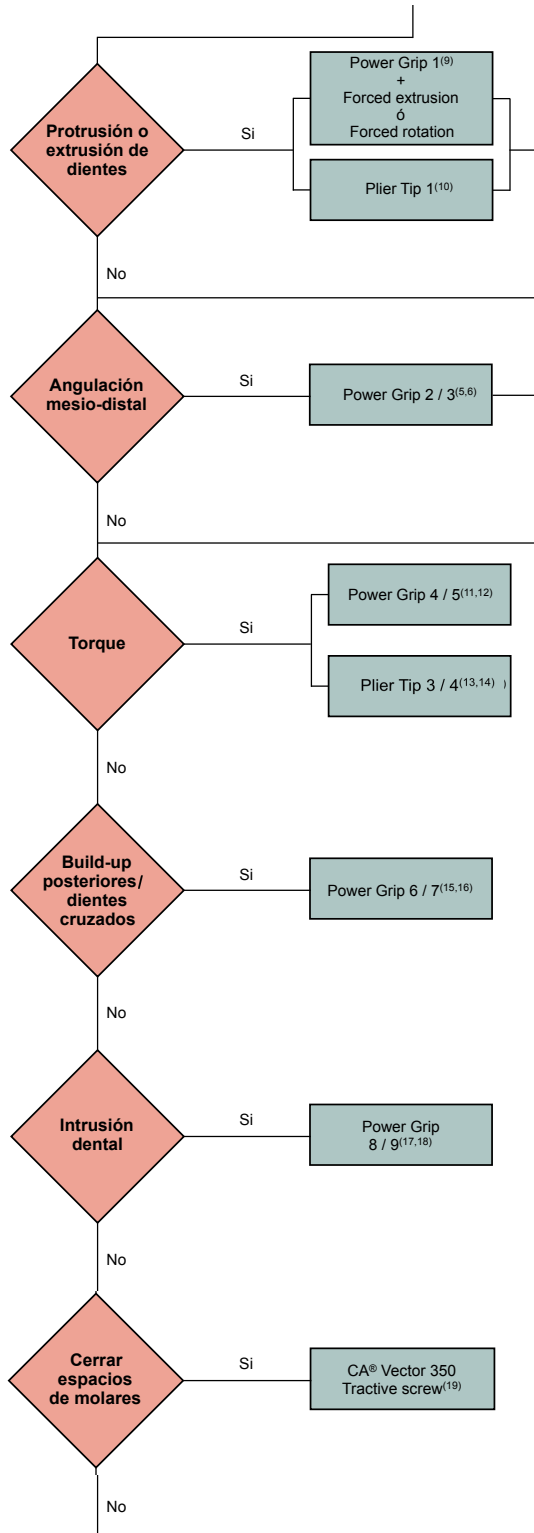
© 2017 Centro de Ortodoncia y ATM, Ladent, SL All rights reserved

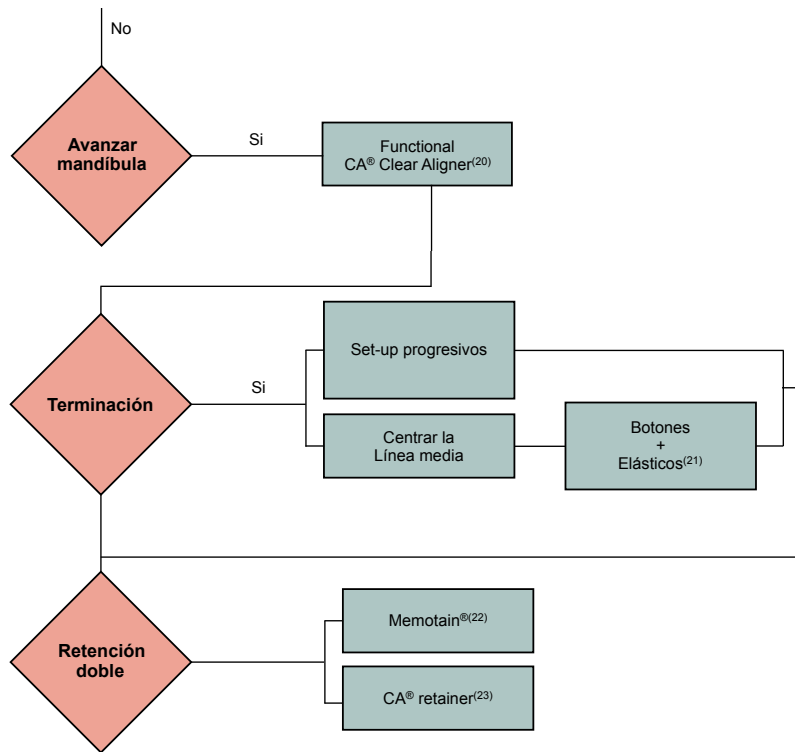
This book or any part thereof may not be reproduced, stored in retrieval system or transmitted in any form or by any means electronic, mechanical, photocopying or otherwise, without prior written permission of the publishers.

WORKFLOW EN
CA® CLEAR ALIGNER

WORKFLOW ON
CA® CLEAR ALIGNER







FIGURAS

1-CA® Vector Screw 40



2-CA® Vector Screw 50



CLINICAL PAPER

3-CA® Vector Screw 30



4-Distalizer kit CA® Vector Screw 350



5-Power Grip 2



6-Power Grip 3



7-Tornillo Piston (Prof. Hintz)



8-Stripping Progressive Technique

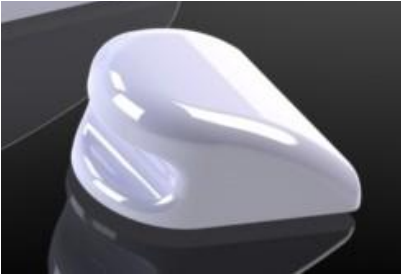




CLEAR ALIGNER

CLINICAL PAPER

9-Power Grip 1



10-Plier Tip 1



11-Power Grip 4



12-Power Grip 5



13-Plier Tip 3



14-Plier Tip 4



CLINICAL PAPER

15-Power Grip 6



16-Power Grip 7



17-Power Grip 8



18-Power Grip 9



19-CA® Vector 350 Tractive Screw

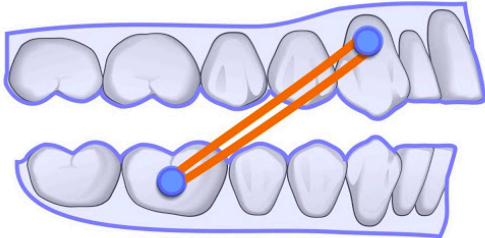


20-Functional-E CA® Clear Aligner



CLINICAL PAPER

21- Botones y elásticos



22-Memotain®

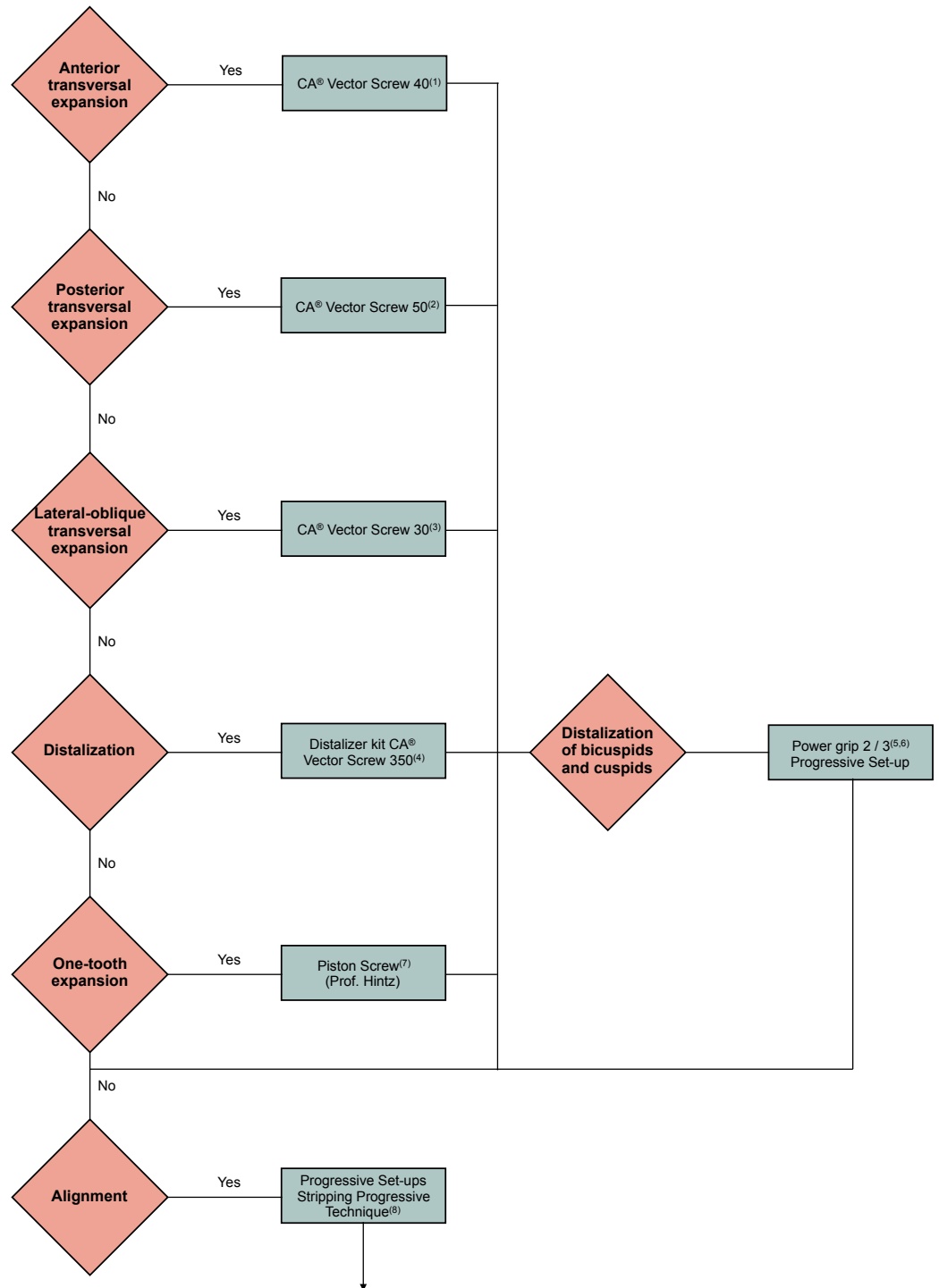


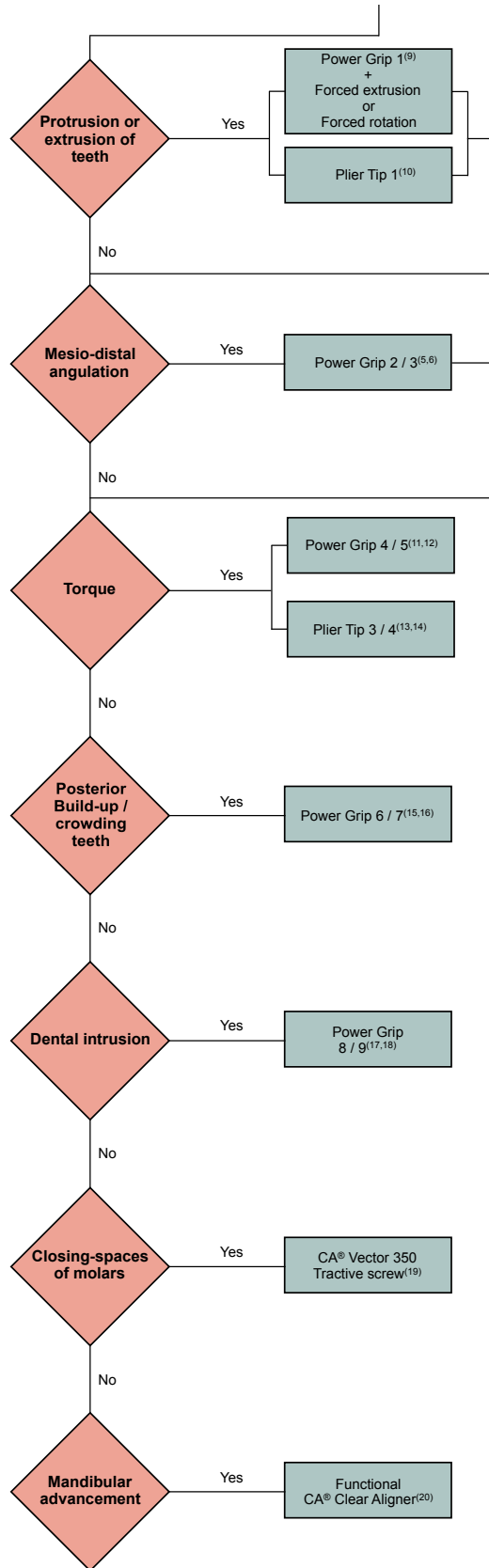
23-CA® Retainer

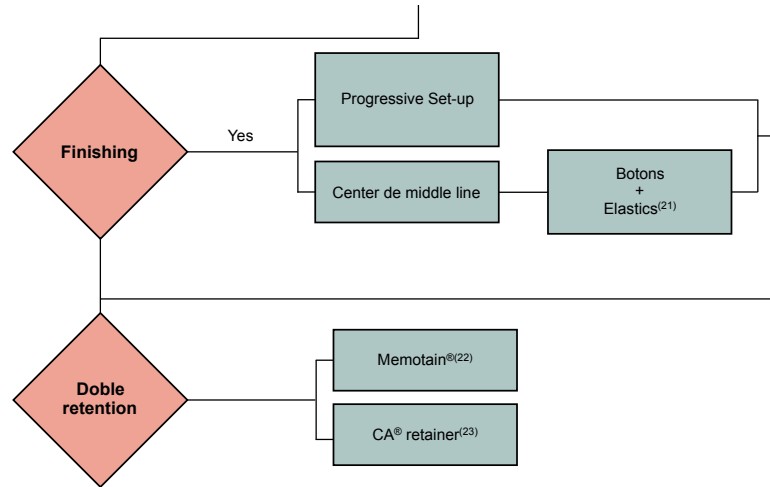


WORKFLOW EN
CA® CLEAR ALIGNER

WORKFLOW ON
CA® CLEAR ALIGNER







FIGURES

1-CA[®] Vector Screw 40



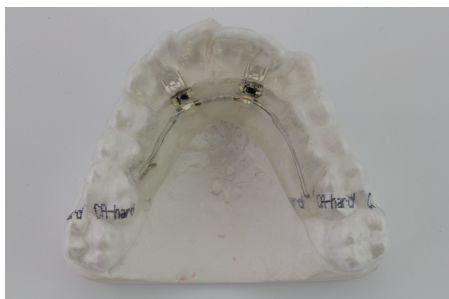
2-CA[®] Vector Screw 50



CLINICAL PAPER



3-CA® Vector Screw 30



4-Distalizer kit CA® Vector Screw 350



5-Power Grip 2



6-Power Grip 3



7-Piston Screw (Prof. Hintz)



8-Stripping Progressive Technique





CLEAR ALIGNER

CLINICAL PAPER

9-Power Grip 1



10-Plier Tip 1



11-Power Grip 4



12-Power Grip 5



13-Plier Tip 3



14-Plier Tip 4



CLINICAL PAPER

15-Power Grip 6



16-Power Grip 7



17-Power Grip 8



18-Power Grip 9



19-CA® Vector 350 Tractive Screw

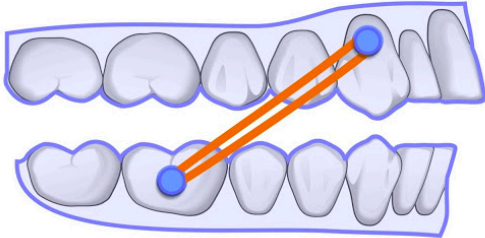


20-Functional-E CA® Clear Aligner



CLINICAL PAPER

21- Botons and elastics



22-Memotain®



23-CA® Retainer



